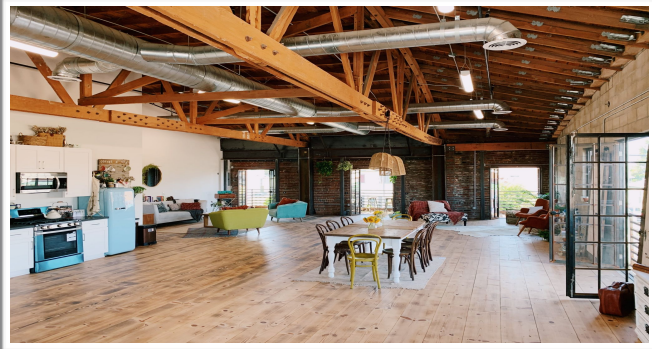
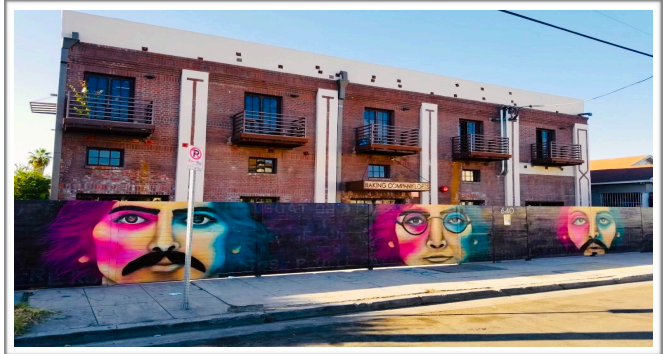


## FOR LEASE

640 E. 40TH PLACE, STE #202 LOS ANGELES, 90011



### Creative Live/Work Studios

For Additional Information, Contact:

[info@nickhadim.com](mailto:info@nickhadim.com)

310-836-2121

6009 Washington Blvd.,  
Culver City, CA 90232

[www.nickhadim.com](http://www.nickhadim.com)

LIC. # 01885300



**NICK HADIM**  
GROUP OF COMPANIES

#### Property Highlights:

- Former Murray Baking Company Building
- Two Floors of New York Inspired Studios/ Lofts
- Open Floor Plan with Concrete & Vintage Wood Flooring
- High Bow Truss Wood Beam Ceiling
- Industrial Steel Windows & Massive Skylights
- Central Air/ Heat with Industrial Ducts
- Private Balcony
- Red Brick and Cinder Block Walls
- Full Bathroom with Shower
- Full Kitchen with Stainless Steel Appliances
- Gated Parking
- One Mile from Banc of California Soccer Stadium
- 100 Feet Away From Avalon Park
- Near USC & DTLA with Easy 110/10 FWY Access

**APX. 1,700 SF**

**\$3,595**

ALL INFORMATION DEEMED RELIABLE BUT NOT GUARANTEED

# FIRST FLOOR PLAN

640 E. 40TH PLACE, LOS ANGELES, 90011



For Additional Information, Contact:

[info@nickhadim.com](mailto:info@nickhadim.com)

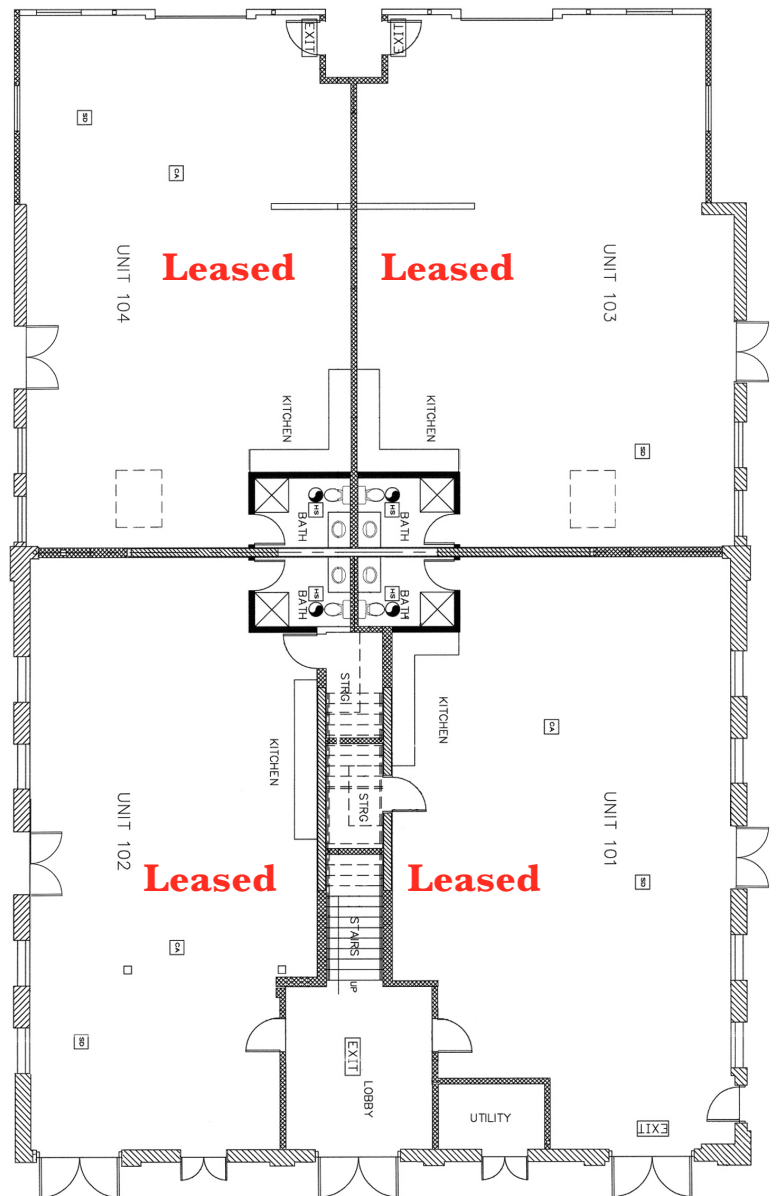
310-836-2121

6009 Washington Blvd.,  
Culver City, CA 90232

[www.nickhadim.com](http://www.nickhadim.com)

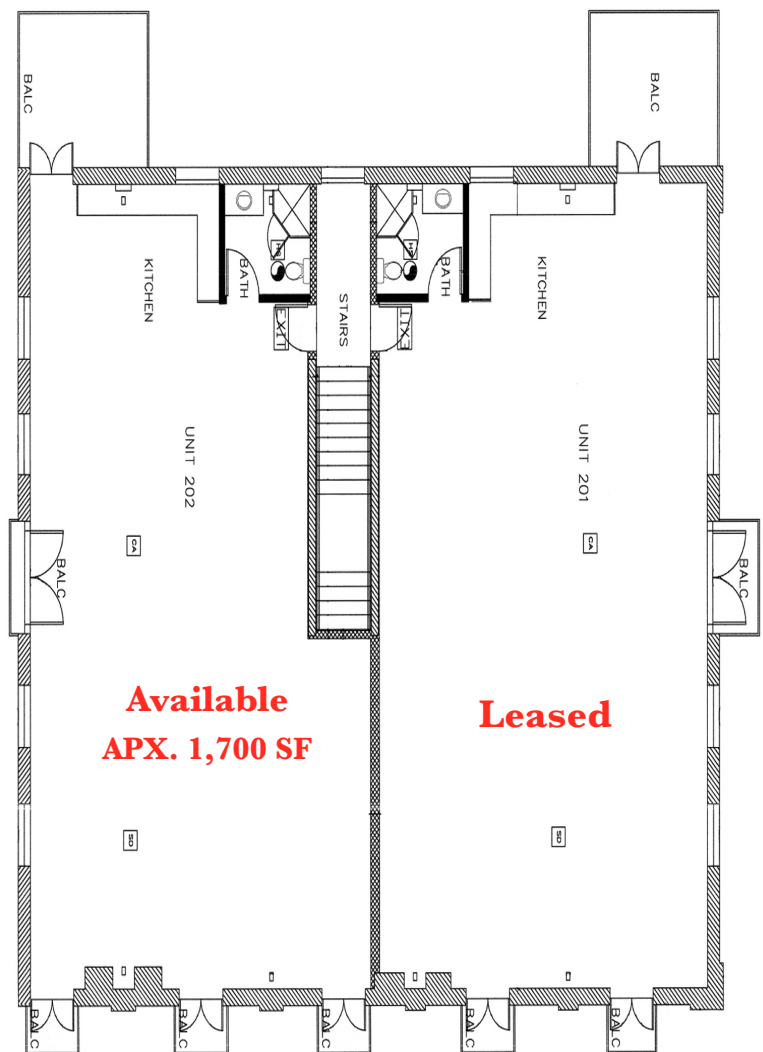


**NICK HADIM**  
GROUP OF COMPANIES



## SECOND FLOOR PLAN

640 E. 40TH PLACE, LOS ANGELES, 90011



For Additional Information, Contact:

[info@nickhadim.com](mailto:info@nickhadim.com)

310-836-2121

6009 Washington Blvd.,  
Culver City, CA 90232

[www.nickhadim.com](http://www.nickhadim.com)

LIC. # 01885300



**NICK HADIM**  
GROUP OF COMPANIES

**Available**  
**APX. 1,700 SF**

**Leased**

ALL INFORMATION DEEMED RELIABLE BUT NOT GUARANTEED



# THE STORY

640 E. 40TH PLACE, LOS ANGELES, 90011



The History behind Murray Baking Co. Building AKA Baking Company Lofts  
Owned and operated as a Murray Baking Factory by the legendary John Murray since 1900s.

## **Vanilla Wafers, Ginger Snaps & Butter Cookies were born here**

The two-story Murray Baking Co. Building was built in 1925 to become the Los Angeles home for the most significant cookie and cracker manufacturer in the United States.

Murray Cookies has been a rich and delicious American tradition since the early 1900s. That's when John L. Murray founded the Murray Baking Company, with an investment of \$500.

Beginning with mouthwatering Vanilla Wafers in an oven that only held four cookie pans John L. Murray and his son, John Jr. continued to expand their product line, adding Ginger Snap and Butter Cookies.

Today Murray is a part of the Kellogg family of brands, Murray's Cookies still offer the same successful recipe of great taste and great value.

We have since reimagined this gem into what we call "Baking Company Lofts." The idea was to convert it into a trendy and fun compound. A place where creative minds can live, work, play and create amazing things together.

The two-story compound consists of six New York inspired lofts with massive industrial windows, red brick wall, exposed bow truss wood ceiling, Super Wide Burnt Wood Planks, Concrete flooring, large private balconies, a lush outside patio, and gated parking.

It is located in Exposition Park neighborhood one mile away from Banc of California Soccer Stadium, and one mile south-east of the USC Village and campus with easy access to DTLA as well as the 10/110 FWY.

Follow in the footsteps of History!  
Baking Company Lofts™



**NICK HADIM**  
GROUP OF COMPANIES

