

FOR LEASE

5176 SANTA MONICA BLVD. LOS ANGELES, 90029



Creative Showroom/ Studio/ Office

Property Highlights:

- Former Charlie Chaplin Studio
- Two Floors of New York Inspired Flex Space
- Open Floor Plan with Wood Flooring
- High Wood Beam Exposed Ceiling
- Industrial Steele Windows
- Massive Industrial Skylights
- Red Brick Walls
- Private Bathroom
- Freight Elevator
- Hollywood Media District

Suite 101	Price: \$3,195	APX. 1,540 SF
Suite 102	Price: \$2,495	APX. 1,460 SF
Suite 106	Price: \$3,195	APX. 2,050 SF
Suite 107	Price: \$2,495	APX. 1,400 SF
Suite 202	Price: \$1,595	APX. 850 SF
Suite 205	Price: \$1,895	APX. 750 SF
Suite 206	Price: \$1,895	APX. 750 SF
Suite 210	Price: \$1,895	APX. 750 SF
Suite 213	Price: \$350	APX. 125 SF

For Additional Information,
Contact:

info@nickhadim.com

310-836-2121

6009 Washington Blvd.,
Culver City, CA 90232

www.nickhadim.com

LIC. # 01885300



NICK HADIM
GROUP OF COMPANIES

ALL INFORMATION DEEMED RELIABLE BUT NOT GUARANTEED

FIRST FLOOR PLAN

5176 SANTA MONICA BLVD., LOS ANGELES, 90029



CHAPLIN

For Additional Information,
Contact:

info@nickhadim.com

310-836-2121

6009 Washington Blvd.,
Culver City, CA 90232

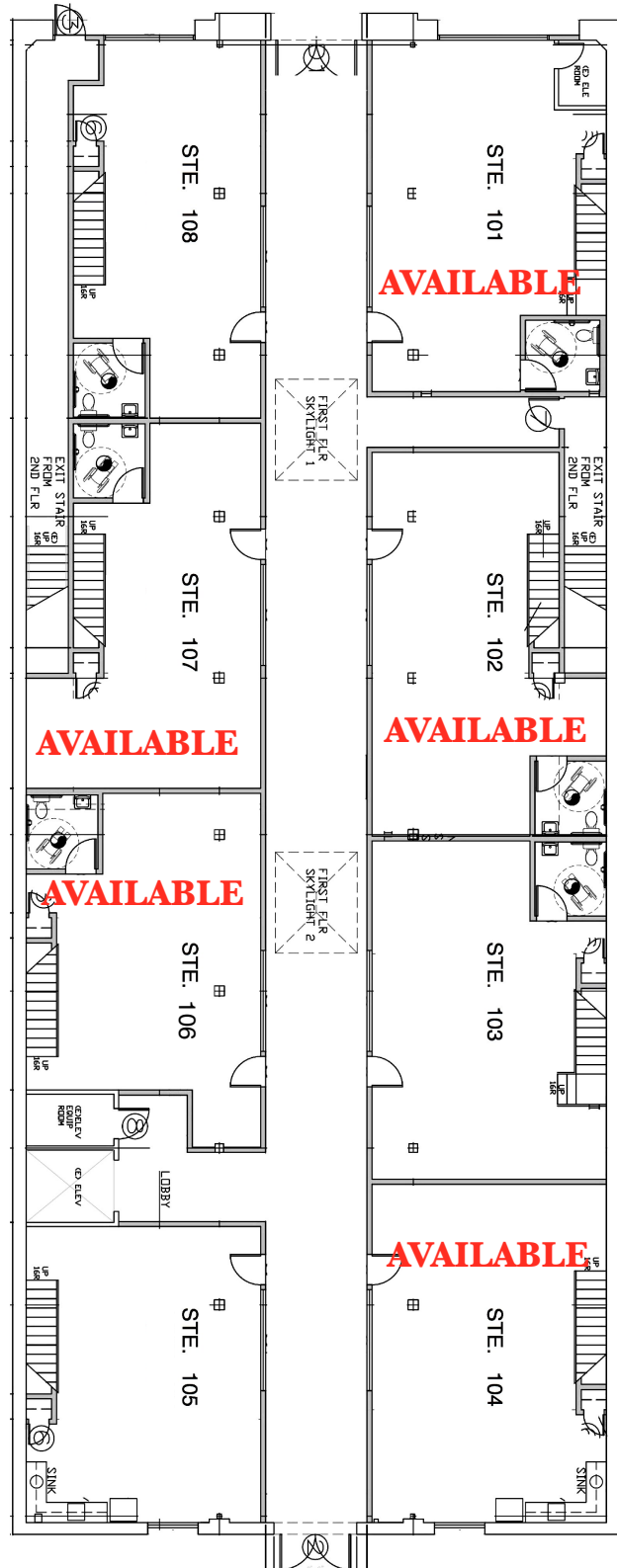
www.nickhadim.com

LIC. # 01885300



NICK HADIM
GROUP OF COMPANIES

N
↑
(N) FIRST FLOOR PLAN



ALL INFORMATION DEEMED RELIABLE BUT NOT GUARANTEED

SECOND FLOOR PLAN

5176 SANTA MONICA BLVD., LOS ANGELES, 90029



For Additional Information, Contact:

info@nickhadim.com

310-836-2121

6009 Washington Blvd.,
Culver City, CA 90232

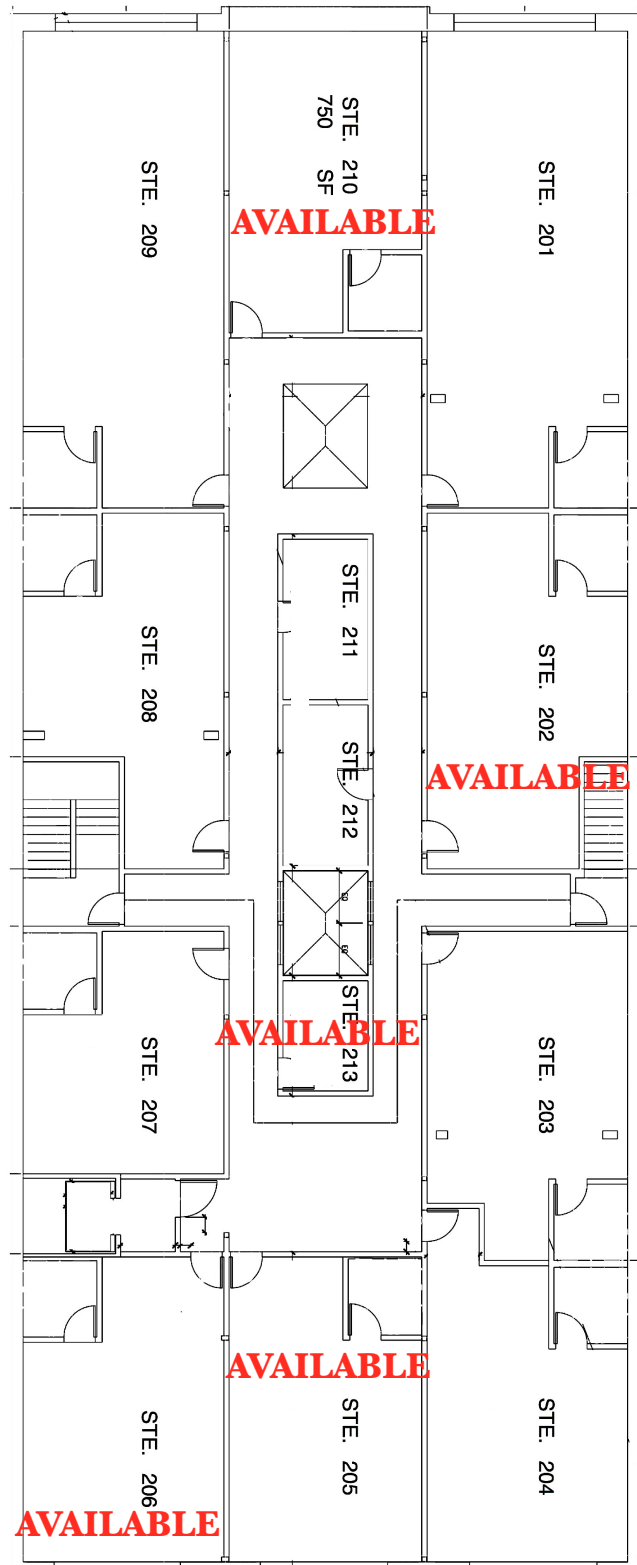
www.nickhadim.com

LIC. # 01885300



NICK HADIM
GROUP OF COMPANIES

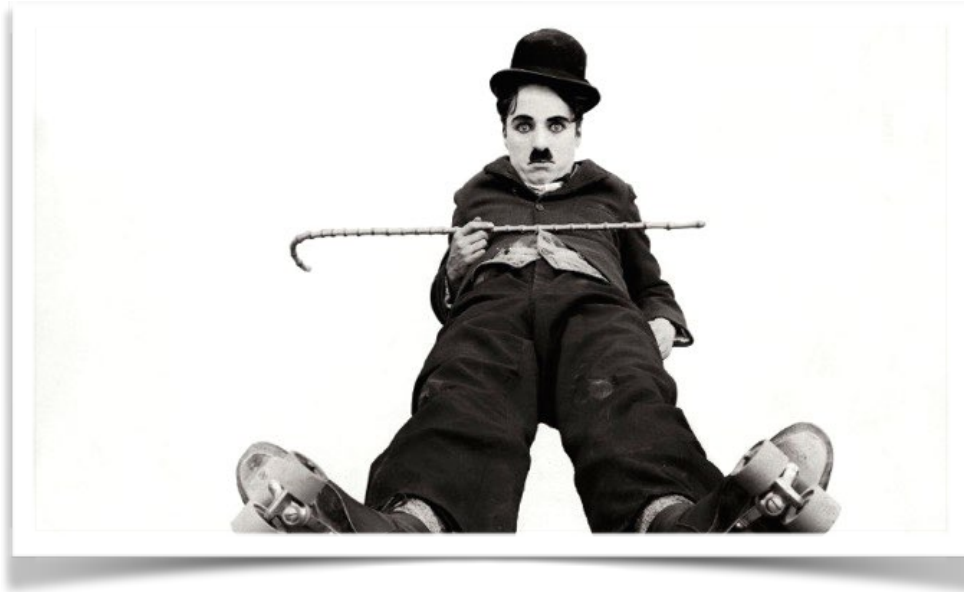
(N) SECOND FLOOR PLAN



ALL INFORMATION DEEMED RELIABLE BUT NOT GUARANTEED

THE STORY

5176 SANTA MONICA BLVD., LOS ANGELES, 90029



The History behind Chaplin Studios

Owned and operated as a film studio by the legendary entertainer, who died in 1977.

Charlie Slept here...

Charlie Chaplin decided to become an independent producer in a desire for more freedom and greater leisure in making his movies in 1917. To that end, he busied himself with the construction of his own studios. This plant was situated in the heart of the residential section of Hollywood on Santa Monica Blvd.

Early in 1918, Chaplin entered into an agreement with First National Exhibitors' Circuit, a new organization specially formed to exploit his pictures. His first film under this new deal was "A Dog's Life" was produced at the subject site. After this production, he turned his attention to a national tour on behalf of the war effort, following which he made a film the US government used to popularize the Liberty Loan drive: "The Bond".

Almost 100 years latter, we got our hands on this gem which was reimagined into what we call "The Chaplin Studios". We decided to keep its original charm, and its original purpose but modernize it to suit today's business world.

The subject offers 18 Creative Work Studios of all sizes in two floors with an arcade that serves as a corridor. As you walk into the building you enjoy the natural light that shines through the original massive skylights that lights up the California Pepper Trees, It totally feels like outdoor. Red Brick Walls everywhere, High Wood Beam Ceiling and allure anywhere all over the place.

Follow the footstep of the legend, and become a part of the history! Chaplin Studios™